



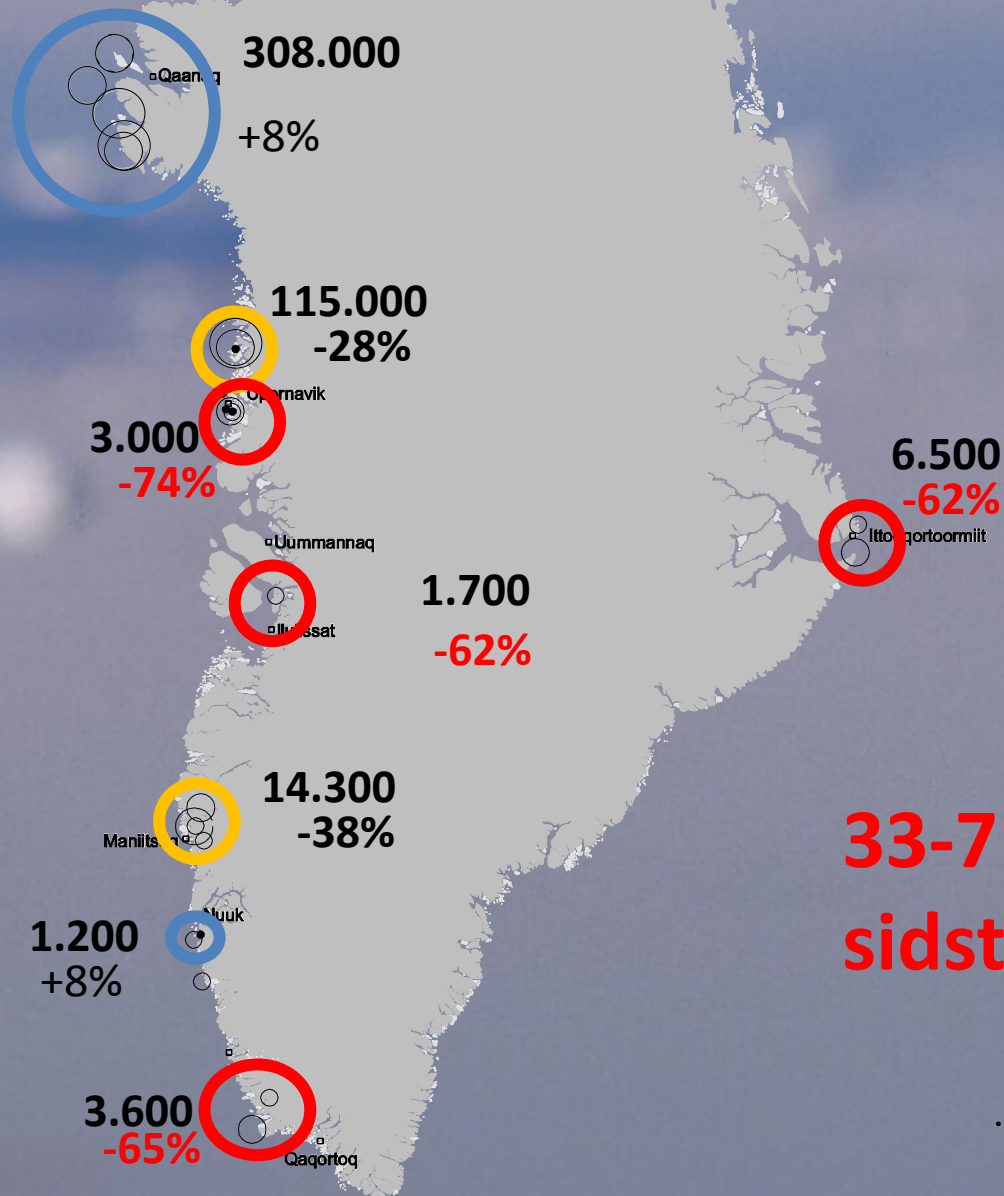
Biologisk rådgivning om lomvie 2013

Flemming Merkel

Aili Labansen



Status



Ændring siden ca. 1990

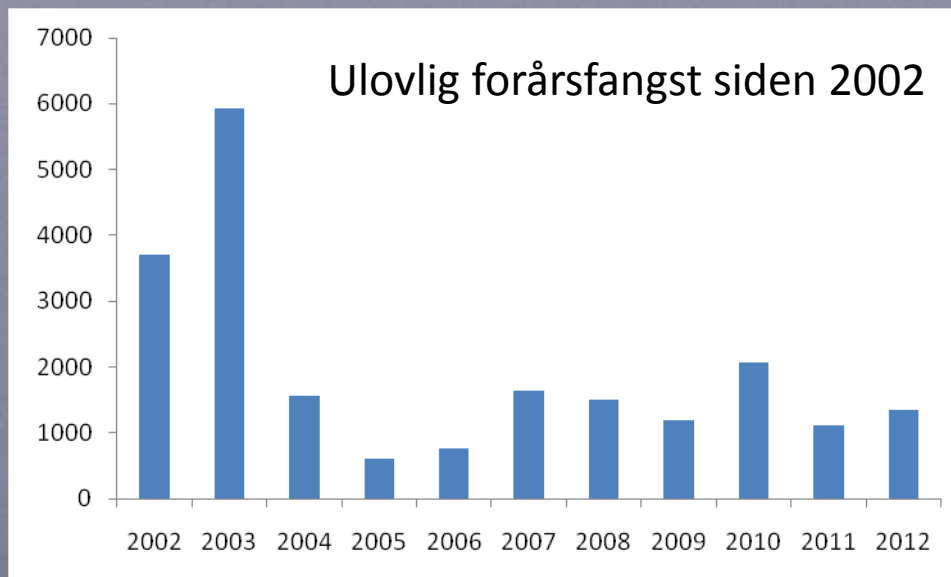
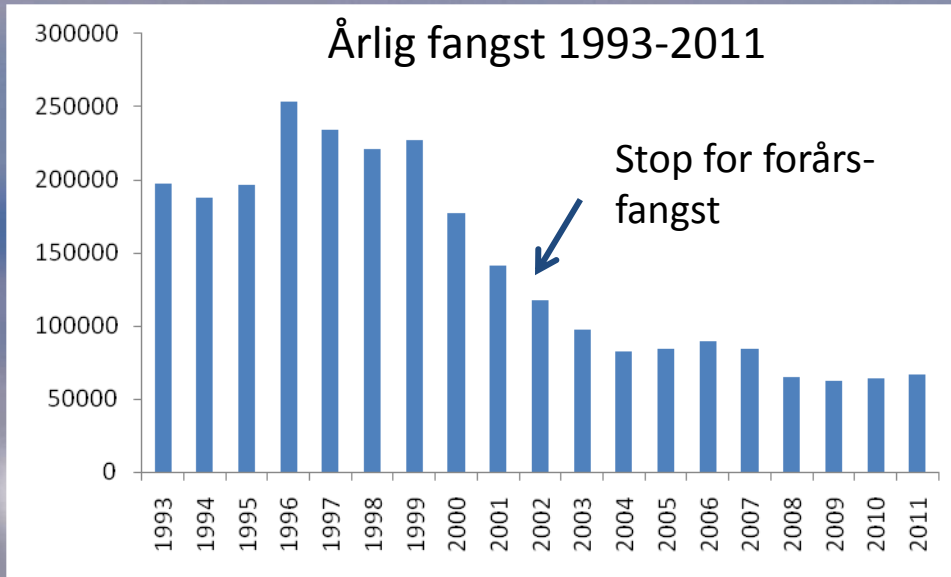
Stabile

Kritiske

Meget kritiske

33-71% fald
sidste 6-13 år



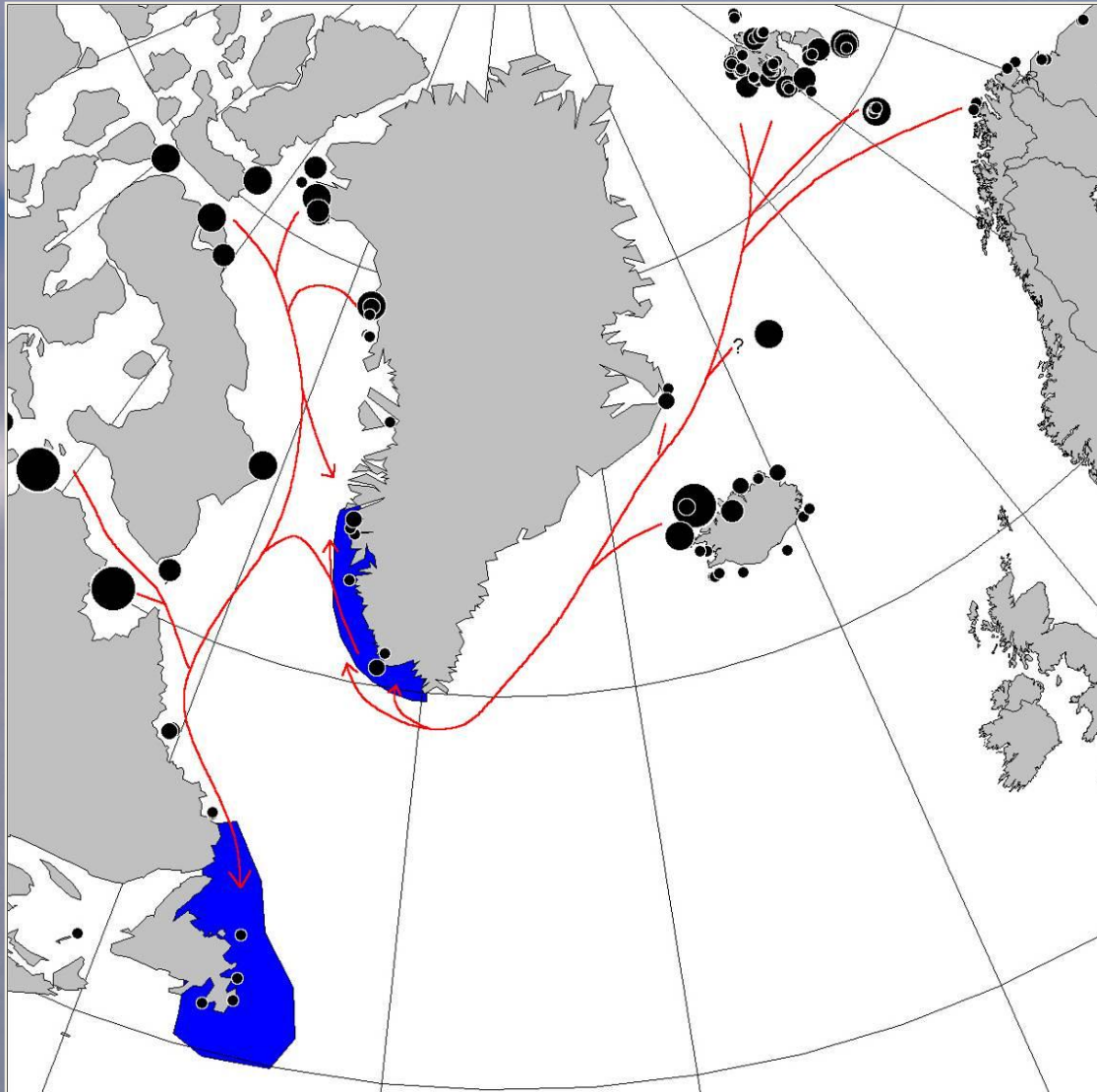


Effekt af forårsfangst

Innaq (Disko): 10 lomvie/år

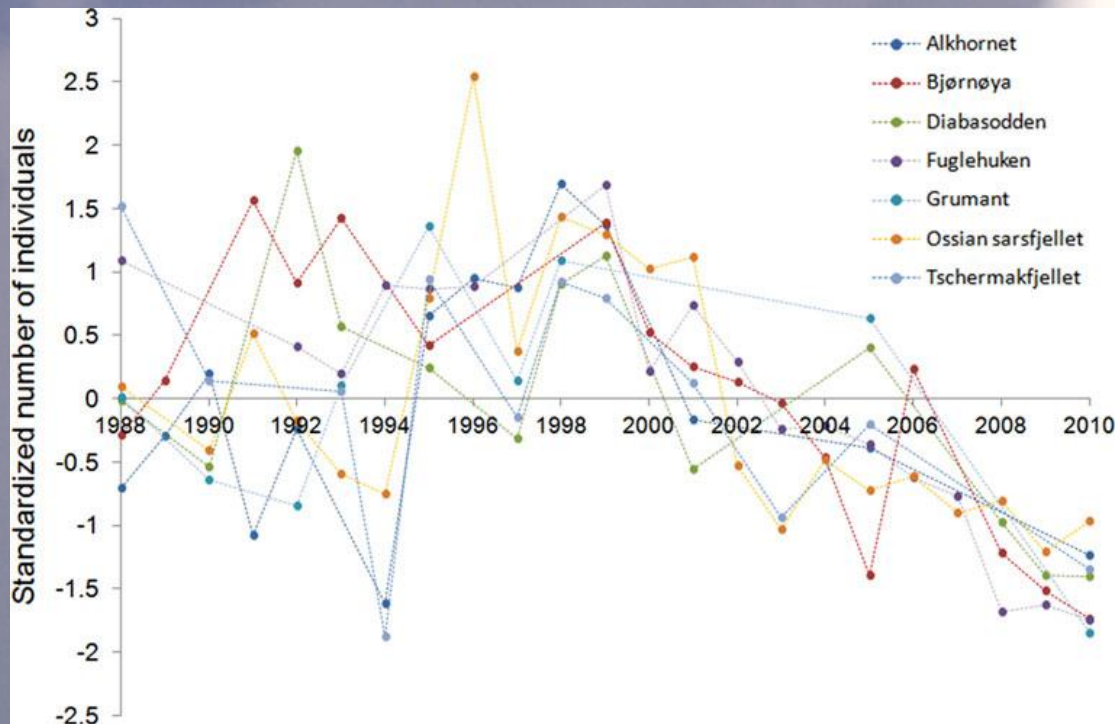


Trækveje for lomvien



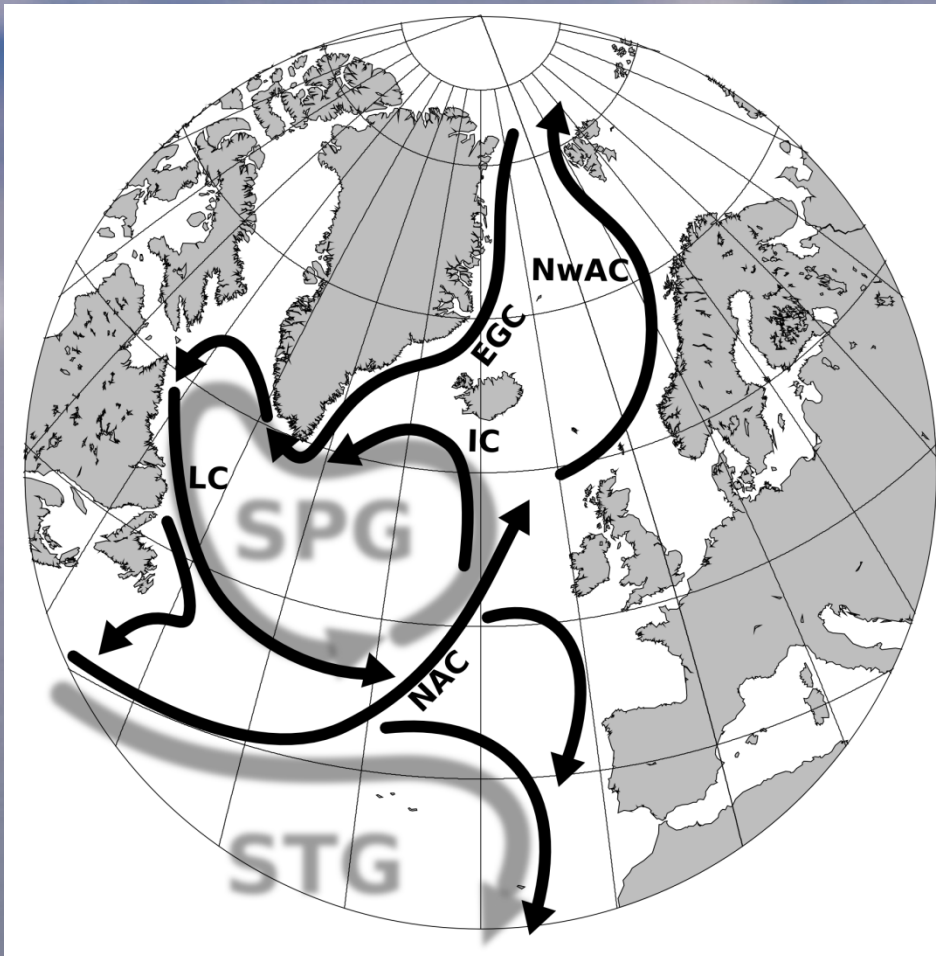


Bestandsnedgang på Svalbard





Oceanografiske ændringer





- Totalfredning i 10 år
- Alternativt:
 - Forkortet jagtperiode: 15.okt-15.nov.
 - Stop for forårsfangst i Ittoqqortoormiit
 - Ekstra tiltag mod ulovlig fangst





In. In .

Flemming Merkel & Aili Labansen

Afdeling for Pattedyr og Fugle

