



Nuuk. 3. december 2020

Nipisat arnarluit 2021imi pisassiissutigineqarnissaannut ilisimasassat

Aqutsinermut pilersaarut nipisanut arnarlunnut tunngasoq nutarterneqarmat siunnersuineq aamma nutarterneqarpoq.

Arnarlunnut TAC tamakkiisoq 2020imi aalisarnerisa nalaanni 1362 tonsinut qaffanneqarpoq, tunineqartulli 1321 tonsiupput, tassa TAC-tut taggineqaraluartuminngarnik 14%-imik qaffasinner-tut amerlanerusunik pisaqartoqarpoq, siunnersuinerlu 1159 tonsiusimagaluarpoq. Ukiuni 1987-2020 pisarineqarsimasut amerlassusiat takussutissiaq 1-imi takuneqarsinnaapput.

LPUE (Aalisartut aalajangersimasut suannik tunisinerat agguaqatigiissillugu) 2020-meersoq, peqassutsit qanoq innerannut tikkuussisutut atorneqartartoq, ukiuni ukunani 2010-2020 aatsaat taamak qaffasitsigisimavoq (Tabel 1, Takutissassiaq 2). Arnarlunniartut pisassatik 2020-mi ukiuni siuliinut piffissap 2010-2020 ingerlanerini aatsaat taamak pisassatik pisaripallassimatigaat (Takutitassiaq 3), tassa aalisartut namminneq oqariartuutaat assigalugu aalisarfiulluarsimavoq.

Kisitsisit LPUE naapertorlugit pissarsiat, aqutsinermullu pilersaarut aallaavigissagaanni, **taava Pinngortitaleriffiup 2021imi arnarlunniarnissamat siunnersuineri (ataani kipparissup iluani allassimasoq) malillugu TAC 2020meersoq 6.1 %inik qaffanneqassaaq 2021imi 1229.4 tonsinngortillugu.**

2021imut siunnersuineq: LPUE₂₀₁₉₋₂₀₂₀ (166.2) LPUE_{ref 2010-2013}-minngarnik qaffasinneruvoq (156.6). Aqutsinermut pilersaarummi taaneqareersutut kingullermik siunnersuinerlut sanilliullugu TAC (6.1%-imik) qaffasinnerussaaq katillugit 1229.4 tonsinngortillugu.

Timmissat imarmiut pisarisoorneqartarnerat ikilisinniarlugit (soorlu mitit) taava Pinngortitaleriffiup innersuussutigaa arnarlunniarneq sapinngisamik kingusinnerpaamik ingerlanneqartassasoq. Piffissami kingusinnerpaami arnarlunniarneq aallartinneqarpat taava timmissat imarmiut amerlanersaasa ukiiffimminnit qimagutereersimanissaat utaqqineqarsinnaassagaluarpat. Ukiuni kingullerni tulaasorneqarsimasut nalilersorneqarneri aallaavigalugit takuneqarsinnaavoq (naliliineq 2019imi taaneqareersutut aammalu Takutitassiaq 3mi) takuneqarsinnaasutut arnarlunniarnerup aallartinnerani aalisarneq pitsaavallangereerpoq, taamaattumillu tamakkiisumik pisarineqartunut sunniuteqarpallaarani.

Pinngortitaleriffik

Grønlands Naturinstitut - Greenland Institute of Natural Resources - www.natur.gl

Postboks 570, 3900 Nuuk, Greenland. TLF +299 361200

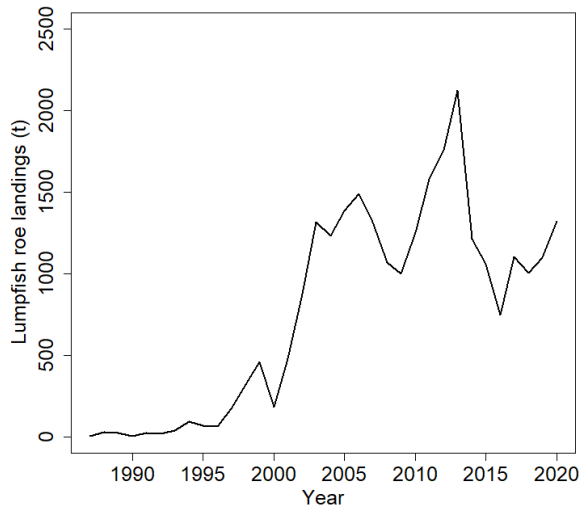
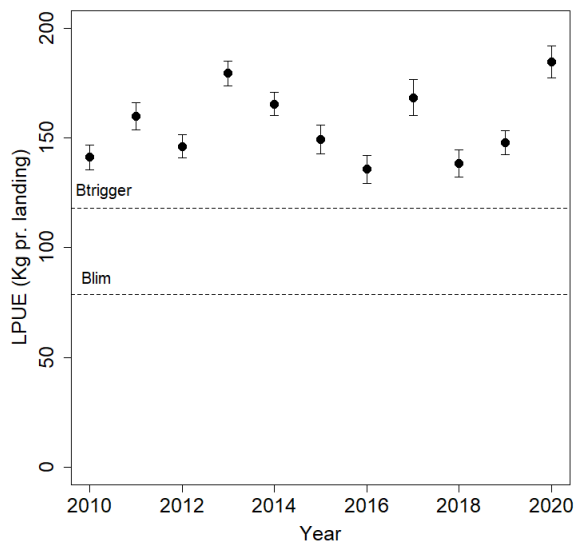


Figure 1: Total lumpfish roe landings (t) from 1987 to 2020.

Table I: LPUE index by year.



Year	LPUE
2010	141.1
2011	160.0
2012	146.1
2013	179.4
2014	165.5
2015	149.3
2016	135.6
2017	168.4
2018	138.4
2019	147.7
2020	184.6

Figure 2: LPUE estimate for the West Greenland area. Vertical bars are standard errors. $B_{trigger}$ and B_{lim} values are indicated.

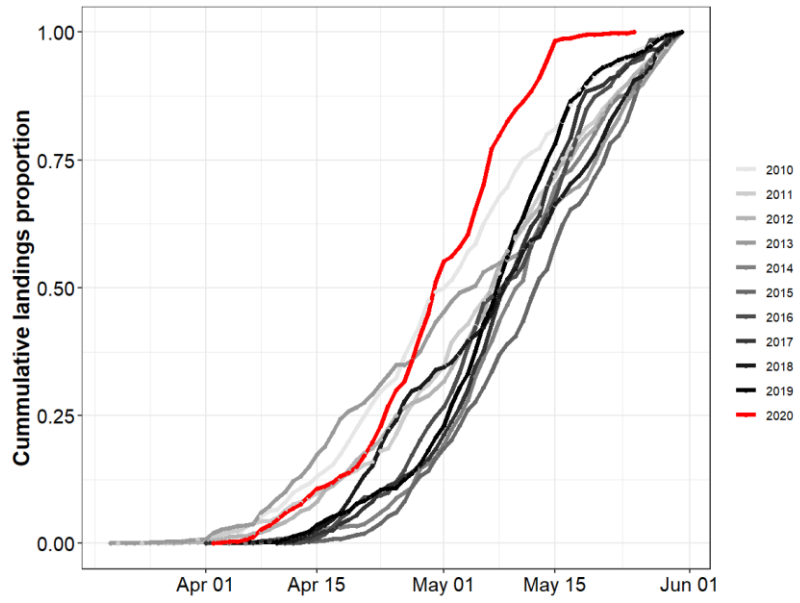


Figure 3: Cumulative catches in proportions