

# PINNGORTITALERIFFIK

GRØNLANDS NATURINSTITUT

GREENLAND INSTITUTE OF NATURAL RESOURCES

P.O. BOX 570, 3900 NUUK. TEL: +299 361200. WWW.NATUR.GL



Naatsumik: aasaanerani qilalukkat qernertat takkusimaarfigisartagai pillugit paasissutissat pingaaruteqartut, aatsitassarsiornermi misissueqqaarnernilu isiginiagassat

[minerals@natur.gl](mailto:minerals@natur.gl)

Nuuk, decemberi 1-at 2022

## Aasaanerani qilalukkat qernertat takkusimaarfigisartagai pillugit paasissutissat kingulliit pingaaruteqartut

### Ilassuteqartut

Rikke Guldborg Hansen, Miluumasunut Timmissanullu Immikkoortortaarfik

Oti Tervo, Miluumasunut Timmissanullu Immikkoortortaarfik

Ida Bomholt Dyrholm Jacobsen, Avatangiisinut Aatsitassanullu Immikkoortortaarfik

Anders Mosbech, Danmarkimi Avatangiisinut Nukissiuuteqarnermullu Ilisimasaqarfik

David Boertmann, Danmarkimi Avatangiisinut Nukissiuuteqarnermullu Ilisimasaqarfik

Karl Brix Zinglensen, Avatangiisinut Aatsitassanullu Immikkoortortaarfik

### Tunuliaqutaasoq

Allaaserisaq *Aatsitassarsiorneq pineqartillugu Nunami Malittarisassat nalunaaruteqartarnerlu* ('Nunami Malittarisassat') (Anon., 2000) takutippaa sumiiffinni piffissamilu aaliangersimasuni uumasut pillugit immikkut malittarisassaqaarnissaq. Peruserineqartussat uumasut sumiiffinni taaneqartuni pissusaannut attuumatinneqarput.

Nunami Malittarisassat naapertorlugit sumiiffiit innersuussallu aallaaveqarput piffissami pineqartumi uumasut pillugit ilisimasat. Kalaallit Nunaanni Naalakkarsuisut kissaateqarput Nunami Malittarisassat-ni kapitali 2 aamma 3 nalunaaruteqartarneq aammalu nunap assinga qarasaasiatigoortoq NatureMap-mi [www.eamra.gl](http://www.eamra.gl) (naturemap.eamra.gl) ilanngunneqassasoq. NatureMap-mi tassaavoq qarasaasiatigut nunap assinganik quppersagaq Kalaallit Nunaata avatangiisianut nunaanullu tunngasoq. Paasissutissat NatureMap-meersut NunaGIS aamma GovMin (LicenceMap) aqutigalugu toqqaannartumik paasissutissanik aallerfigineqarsinnaavoq.

Naatsumik una allaaserisaq tassaavoq oqaasertaliussanut kapitali 2-mut immikkoortoq 2.03.08-mut *Qilalukkat qernertat sumiiffii* aasaanerini takkusimaarfii pillugit ilassutitut paasisatut kingullertut isigineqartussaq. Ukiuunerani takkusimaarfiit pillugit inassuteqartoqassappat paasissutissat immikkut suliarineqartariaqassapput.

### **Ad. 1: Mianernartog**

Kalaallit Nunaata nalunaarsugaataani kitaata avannaani qilalukkat qernertat Allattorsimaffimmi Aappaluttumi 'Aarlerinartorsiortinneqartut' (NT) nalunaarsorsimapput. Kalaallit Nunaata nalunaarsugaataani kangiani qilalugaqassuseq Allattorsimaffimmi Aappaluttumi 'Nungulersutut' nalunaarsoqapput (EN) (Boertmann & Bay 2018).

Kalaallit Nunaanni qilalukkat qernertat sumiiffii:

- Qimusseriarsuaq (Melville Bugt),
- Ikersuaq (Inglefield Bredning) aamma
- Kalaallit Nunaata kangiani Kangertittivaq-miit (Ittoqqortoormiit ) Isortoq nunaqarfimmut

Qanittumi nunarsuaq tamakkerlugu uumasogatigiit eqimattakkaartartut pillugit eqqissisimatitsinermi suliaqartunit (Hobbs et al. 2020) naliliisoqarpoq qilalugaqatigiit annertusisamik immikkut isiginiarneqassasut.

Qilalukkat qernertat avataaniit ajoqusersorneqarnermut malussarissuupput, tamanna nipinut immap naqqatigoorpat imaluunniit angallatineersuuppat.

Qilalukkat qernertat ingerlaartarput c. 3-4 knob-tut sukkassuseqarlutik. Inassutigineqarpoq angallatit 5 knob angullugu sukkatigisumik ingerlaartartut sumiiffinni mianernartutut taaneqartuni ingerlaartarnissaat inerteqqutigineqassasoq.

2027-mi aamma 2018-mi misileraalluni misissuisimanerup takussutissaqartippaa qilalukkat qernertat immap naqqatigut misissuinerup annertuumik malussarissut. Pissutsimikkut qisuaariaataat erserpoq, pissusaat allanngorput, nipiliorneri allannguuteqarput, nikittarnerat annikillivoq aqqartarnerallu allanngorluni. Puisimallutik ingerlaarnerini sukkassusaat aamma allannguuteqartoq sinersorerulernerinillu nassataqassasoq ilimanaateqarpoq.

Ajoqusersorneqarnermik aammalu mianerineqartariaqartut Allattorsimaffianni Aappalaartumi allassimasut peqqutigalugit inassutigineqarpoq Nunami Malittarisassat ad 2-mi aamma ad. 3-mi takuneqarsinnaasutut aasaanerani takkusimaarfigneqartarfinni sumiiffiit annertusineqassasut.

### **Ad. 2: Piffissaq atuuffiususaaq**

Nunami Malittarisassat (November 2000) piffissaliussat taaneqartut allattorsimapput:

1. Kalaallit Nunaata Kangiani: Piffissami juuni 1 – oktobari 31.
  - a. Kalaallit Nunaata kitaata avannaani: Piffissami aaggustip 1 – oktobarip 15anut

Piffissaliussat imatut isikkoqalernissaat inassutigineqarpoq:

1. Kalaallit Nunaata Kangiani: Piffissami juuni 1 – oktobari 31.
  - a. Kalaallit Nunaata kitaata avannaani: Piffissami juunip 1 – oktobarip 31anut

Piffissami juulip 1-aniit oktobarip 15-ata akornani aasaanerani qilalukkat qernertat takkusimaartarnerinit misissuisimanermit paasisat tunngavigineqarput. Piffissaq innersuunneqartoq sivisuneruvoq immikkut eqqumaffigineqarmat qilalukkat qernertat ingerlaarnerisa nalaani sikup sunniuteqarsinnaanera pissutigalugu.

Ukiut kingulliit timmisartukkut misissuisimanerit eqqarsaatigissagaanni inassutigineqartartussat aasaanerani aammalu ukiuunerani assigiinngitsuussasut innersuussutigineqarpoq. Misissuinerit takutippaat qilalukkat qernertat sikup sinaaniittut sikup sermillu iigartartut allanngorartuuneri peqqutigalugit neriniarfigissallugit iluarinerusaraat, taamaattoqarneralu aaliangersaanernut pingaaruteqarsinnaapput.

### **Ad. 3: Sumiiffiit pillugit paasisat kingulliit**

Sumiiffiit allannguuteqartut figure 1-mi takuneqarsinnaapput. Siuliani sumiiffiit atuuttusut figure 2-mi takuneqarsinnaapput.

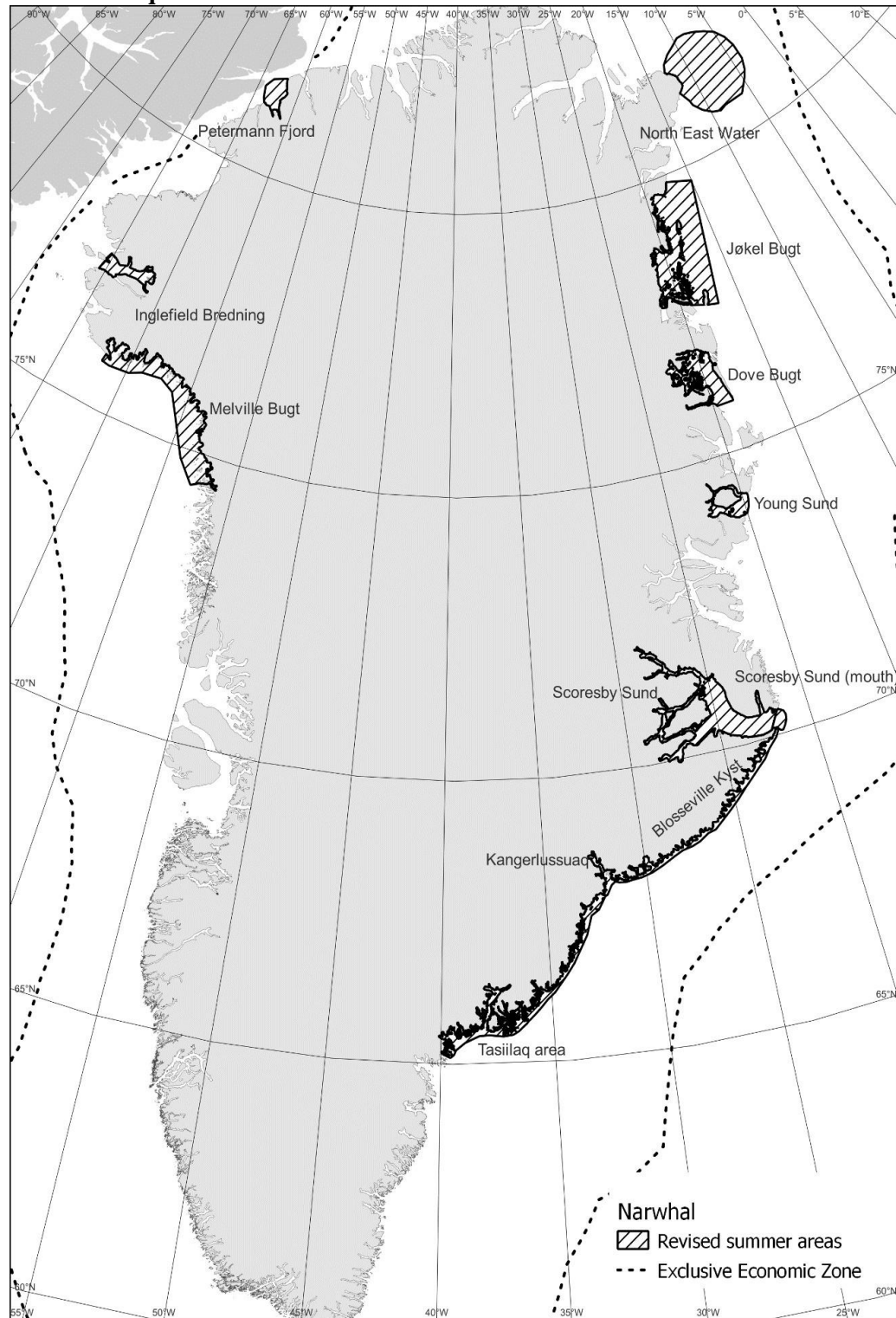
Qilalukkat qernertat Kalaallit Nunaata kangiani aammalu Kalaallit Nunaata kitaata avannaani aasaanerani sineriammi takkusimaartartut ukiuni kingullerni annertusisamik misissuinerit takutippaat.

Kalaallit Nunaata kitaata avannaani Qimusseriarsuarmi (Melville Bugt), Ikersuarmi (Inglefield Bredning) aamma Petermann Fjordimi nalilerneqarpoq sumiiffinni taakkunani aasaanerani qilalukkanut qernertanut pingaaruteqarluinnartuusut.

Kalaallit Nunaata kangiani kangerluit aasaanerani pingaaruteqarluinnartutut isigineqassapput. Kangiata avannaani imartat ilanngullugit, Jøkel Bugt, Dove Bugt, Young Sund, Kangertittivaq (Scoresby Sund) kangerlussua, Blosseville Kyst sinerlugu kangerluit, Kangerlussuaq aamma Tasiilaq / Sermilik.

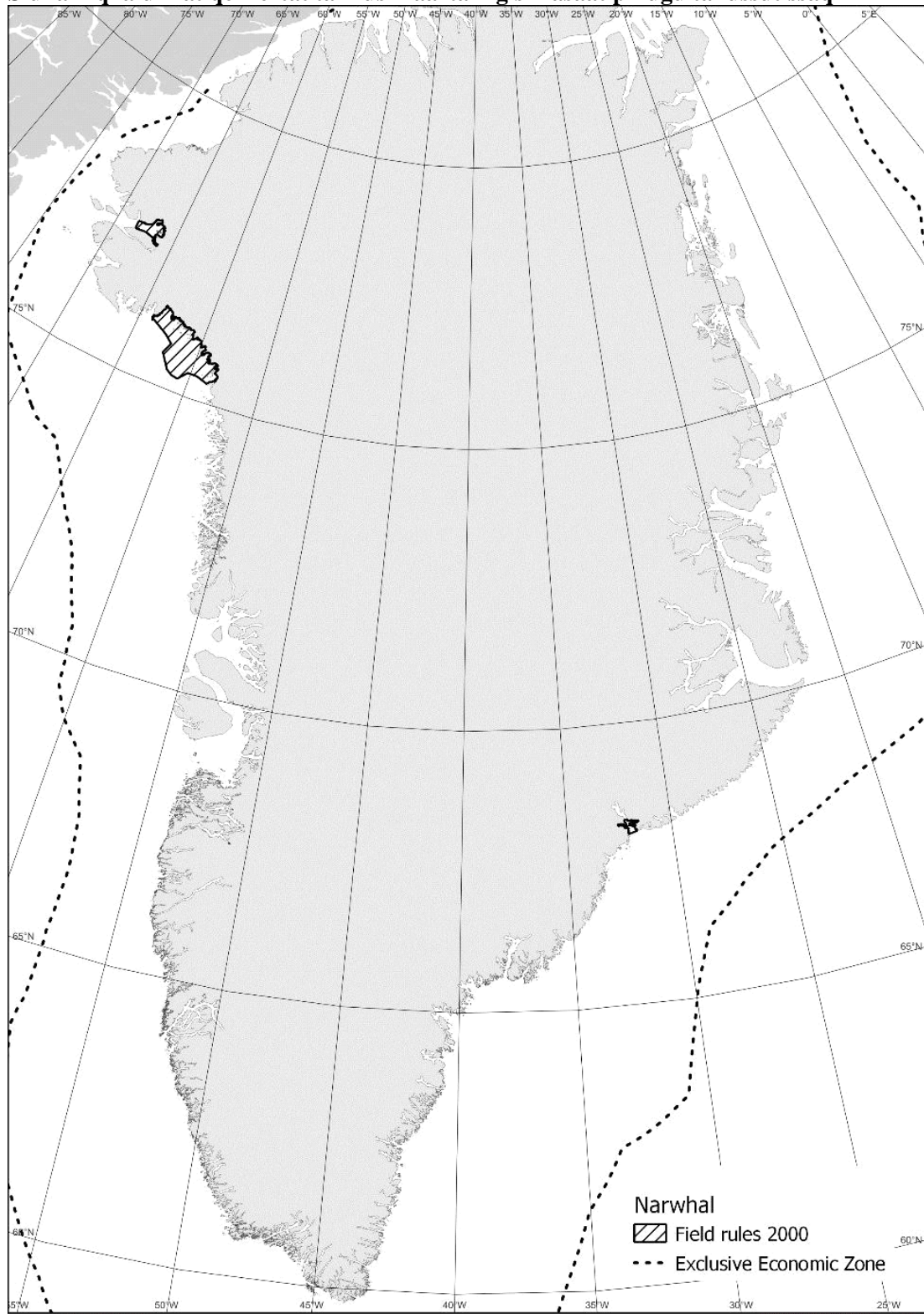
Ukiut tamaasa sikusarnerata allanngorarnerat peqqutigalugu sikup sermillu iigartartut sinai qilalukkanut qernertanut pingaaruteqarluinnarput, pissutsit allanngornerini pissusai allanngortaramik. Inassutigineqarpoq sikup pissusaa ilutigalugu angallannikkut nunamilu sulinikkut immikkut isiginiarneqassasut.

**Qilalukkat qernertat aasaanerani takkusimaartarfia pillugu paasisat kingulliit tunngavigalugu takussutissaq**



Figur 1. Aasaanerani qilalukkat qernertat takkusimaartarfii pingaarutilit. Paasisat kingulliit tunngavigalugit takussutissaq. Novembari 2022.

**Siuliani qilalukkat qernertat takkusimaartarfigisimasaat pillugu takussutissaq**



Figur 2. Siuliani aasaanerani qilalukkat qernertat takkusimaartarfigisimasaat pingaarutillit pillugit takussutissaq. Siuliani sumiiffiit Nunami Malittarisassat. Novembari 2000.



## Reference

- Anon. (2000). Rules for field work and reporting regarding mineral resources (excluding hydro- carbons) in Greenland. [https://naalakkersuisut.gl/~me-dia/Nanoq/Files/eamra/rules\\_for\\_fieldwork.pdf](https://naalakkersuisut.gl/~me-dia/Nanoq/Files/eamra/rules_for_fieldwork.pdf)
- NAMMCO-JCNB Joint Scientific Working Group  
Joint Commission on Conservation and Management of Narwhal and Beluga, JCNB Boertmann, D. & Bay, C. 2018. Grønlands Rødliste 2018 – Fortegnelse over grønlandske dyr og planters trusselstatus. – Aarhus Universitet, Nationalt Center for Energi og Miljø (DCE) og Grønlands Naturinstitut.
- Boertmann, D., Blockley, D., & Mosbech, A. 2020: Greenland Sea – an updated strategic environmental impact assessment of petroleum activities. 2<sup>nd</sup> revised edition. Scientific Report from DCE – Danish Centre for Environment and Energy No. 375, 386 pp.
- Dietz, R., Heide-Jørgensen, M. P. 1995. Movements and swimming speed of narwhals, *Monodon monoceros*, equipped with satellite transmitters in Melville Bay, northwest Greenland. *Canadian Journal of Zoology*. 73(11): 2106-2119. <https://doi.org/10.1139/z95-248>
- Hansen, R.G., Fossette, S., Nielsen, N.H., Borchers, D. & Heide-Jørgensen, M.P. 2015a. Abundance of narwhals in eastern Baffin Bay 2012. – NAMMCO/JCNB Joint Working Group on narwhals and belugas, Ottawa March 2015.
- Hansen, R.G., Fossette, S., Nielsen, N.H., Sinding, M.H.S., Borchers, D. & Heide-Jørgensen, M.P. 2015b. Abundance of narwhals in Melville Bay in 2012 and 2014. – NAMMCO/JCNB Joint Working Group on narwhals and belugas, Ottawa March 2015.
- Hansen, R.G., Borchers, D., Heide-Jørgensen, M.P. 2019. Project 7.2 and 7.3. Summer surveys of marine mammals in the Greenland Sea and Northeast Water and winter survey of marine mammals in the Northeast Water. Greenland Institute of Natural Resources.
- Heide-Jørgensen, M.P., Laidre, K.L., Burt, M.L., Borchers, D.L., Marques, T.A., Hansen, R.G., Rasmussen, M., Fossette, S. 2010c. Abundance of narwhals (*Monodon monoceros*) on the hunting grounds in Greenland. – *Journal of Mammalogy* 91: 1135-1151.
- Heide-Jørgensen, M.P., Hansen, R.G., Westdal, K., Reeves, R. & Mosbech A. 2013, Narwhals and seismic exploration: Is seismic noise increasing the risk of ice entrapments? – *Biological Conservation* 158: 50-54.
- Heide-Jørgensen, M.P., Nielsen, N.H., Hansen, R.G., Schmidt H.C., Blackwell, S.B., Jørgensen, O.A. 2015. The predictable narwhal: Satellite tracking shows behavioural similarities between isolated subpopulations. *Journal of Zoology* 297:54-65. Doi:10.1111/jzo.12257
- Hobbs, Roderick & Reeves, Randall & Prewitt, Jill & Desportes, Genevieve & Breton-Honeyman, Kaitlin & Christensen, Tom & Citta, John & Ferguson, Steven & Frost, Kathryn & Garde, Eva & Gavrilov, Maria & Ghazal, Maha & Glazov, Dmitri & Gosselin, Jean-Francois & Hammill, Mike & Hansen, Rikke & Harwood, Lois & Heide-Jørgensen, Mads Peter & Inglangasuk, Gerald & Watt, Cortney. (2020). Global Review of the Conservation Status of Monodontid Stocks. *Marine Fisheries Review*. 81. 1-53. 10.7755/MFR.81.3-4.1.
- Jefferson, T.A., Karkzmarski, L., Laidre, K., O’Corry-Crowe, G., Reeves, R., Rojas-Bracho, L., Secchi, E., Slooten, E., Smith, B.D., Wang, J.Y. & Zhou, K. 2012. *Monodon monoceros*. The IUCN Red List of Threatened Species 2012:

e.T13704A17691711. <http://dx.doi.org/10.2305/IUCN.UK.2012.RLTS.T13704A17691711.e>

n. Downloaded on 04 August 2017

Laidre, K.L., Stirling, I., Lowry, L.F., Wiig, Ø., Heide-Jørgensen, M.P. and Ferguson, S.H. 2008.

Quantifying the sensitivity of Arctic marine mammals to climate-induced habitat change. – Ecological Applications 18 (supplement): S97-S125.

Laidre, K.L., Stern, H., Kovacs, K.M., Lowry, L., Moore, S.E., Regehr, E.V., Ferguson, S.H., Wiig, Ø.,

Boveng, P., Angliss, R.P., Born, E.W., Litovka, D., Quakenbush, L., Lydersen, C., Vongraven, D.

& Ugarte, F. 2015a. Arctic marine mammal population status, sea ice, habitat loss, and conservation recommendations for the 21st century. – Conservation Biology 29: 724-737.

Lowry, L., Laidre, K. & Reeves, R. 2017. Monodon monoceros. The IUCN Red List of Threat- ened

Species 2017: e.T13704A50367651. <https://dx.doi.org/10.2305/IUCN.UK.2017->

<3.RLTS.T13704A50367651.en>. Downloaded on 19 November 2021